



F&A AQUA
holdings, inc.



FACT BOOK 2011

2011年2月期 For the year ended February 28, 2011

株式会社F&Aアクアホールディングス

- ① 基本戦略／事業会社の概要
Basic Strategies/Outline of the Operating Companies
- ② 経営成績(連結)
Results of Operations (Consolidated)
- ③～⑤ 財政状態(連結)
Financial Position (Consolidated)
- ⑥ 1株当たり情報
Per Share Information
- ⑦ セグメント情報
Segment Information
- ⑧ 事業会社別の概況(店舗の状況)
Outline of the Operating Companies (Store Information)
- ⑨～⑩ 連結貸借対照表
Consolidated Balance Sheets
- ⑪ 連結損益計算書
Consolidated Statements of Income
- ⑫～⑬ 連結キャッシュフロー計算書
Consolidated Statements of Cash Flows
- ⑭ 参考資料:株式会社エフ・ディ・シー・プロダクツ
連結財務諸表
Reference Materials: Consolidated Financial Statements for F.D.C. Products Inc.
- ⑮ 参考資料:株式会社アスティ財務諸表
Reference Materials: Financial Statements for AS'TY Inc.
参考資料:株式会社三鈴財務諸表
Reference Materials: Financial Statements for MISUZU Co., Ltd.
- ⑯ 参考資料:株式会社アージュ財務諸表
Reference Materials: Financial Statements for âge Co., Ltd.
- ⑰ 株式情報
Stock Information

表中の () の数値はマイナスを示しています。

2006年2月期以前の連結数値は、統合前の株式会社アスティの連結の数値です。

Figures for fiscal year ended February 28, 2000 to 2006, are consolidated figures for AS'TY Inc, prior to the establishment of a holding company.

「F&Aアクアホールディングス」はジュエリーを中心としたブランドSPA機能をもつ株式会社エフ・ディ・シー・プロダクツ、アパレル・バッグ分野での企画・製造・販売を行う株式会社アスティ、SPA型リテール事業を行う株式会社三鈴、西日本を中心としてファッション分野でリテール事業を展開する株式会社アージュの4社を中心に総合ファッション企業を目指し、事業を展開しております。

資本金は24億円(東証一部上場)、営業収益は通期、連結で464億円(2011年2月期)となりました。当社は、「Challenge & Innovation」をスローガンに掲げ、成長を目指して、海外を視野に入れたビジネスや新しいマーケットの創造に取り組んでいます。

会社概要(2011年2月28日現在)

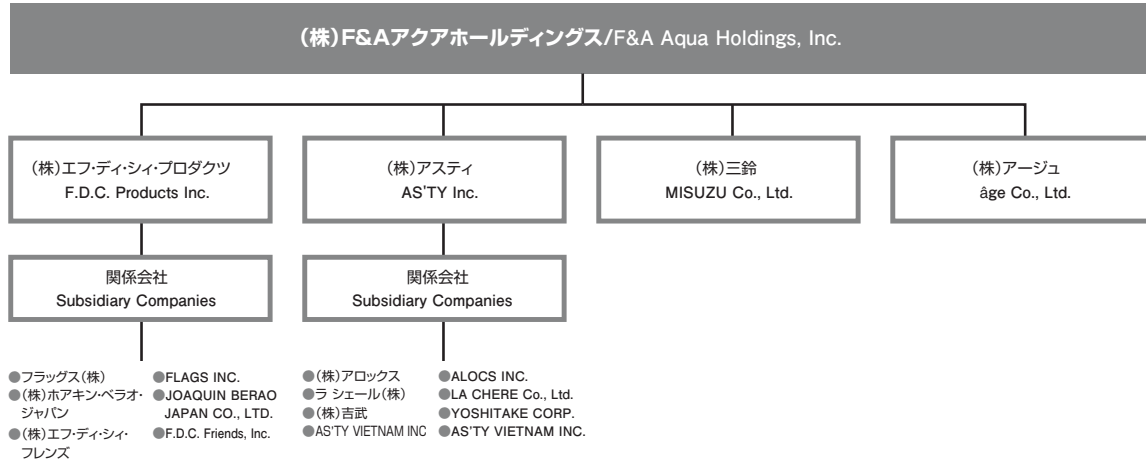
社名	株式会社F&Aアクアホールディングス (英文) F&A AQUA HOLDINGS, INC. (略称) F&AアクアHD
所在地	〒141-0021 東京都品川区上大崎二丁目19-10
設立年月日	1950年5月 (2006年9月1日(株)アスティから社名変更)
資本金	24億8,652万円
事業内容	ジュエリーを中心とするブランド事業、アパレル・バッグを中心とした企画・製造・卸売事業、及び小売事業
従業員数	3,191名
関係会社	14社
役員	(2011年3月1日現在)
代表取締役会長	細田 信行
代表取締役社長	木村 祭氏
代表取締役専務	田村 英樹
常務取締役	鈴木 秀典
常務取締役	宮本 聡
常務取締役	岩森 真彦
取締役	大木 茂生
取締役	西村 政彦
常勤監査役	田坂 英二
監査役	山岡 義憲
監査役	上村 信彦

F&A Aqua Holdings, Inc. ("F&A Aqua Holdings" or "the Company") is a comprehensive fashion company comprised of four core operating arms: F.D.C. Products Inc., a specialty store retailer of private brand apparel (SPA) focusing mainly on jewelry; AS'TY Inc., a designer, manufacturer and marketer of apparels and bags; MISUZU Co., Ltd, a SPA-type retailer, and; âge Co., Ltd., a retailer of fashion items with operations concentrated in Western Japan.

Listed on the First Section of the Tokyo Stock Exchange, F&A Aqua Holdings maintained paid-in capital of ¥2.4 billion as of February 28, 2011 and consolidated operating revenues of ¥46.4 billion for the fiscal year under review. Emboldened by a corporate slogan that places considerable emphasis on the key words "Challenge & Innovation," F&A Aqua Holdings is maintaining a keen eye on overseas business opportunities, while actively endeavoring to identify and cultivate new markets. In this manner, the Company aims to secure stable and sustainable growth throughout the Group.

Corporate Information (As of February 28, 2011)

Company Name:	F&A Aqua Holdings, Inc. (F&A Aqua HD)
Address:	2-19-10, Kami-Osaki, Shinagawa-ku, Tokyo 141-0021
Establishment Date:	May 1950 (September 1, 2006 corporate name change from AS'TY Inc.)
Paid-in Capital:	¥2,486,520,500
Business Activities:	Brand business mainly in jewelry; Planning, manufacture and wholesale mainly of apparel and bags and retail business
Number of Employees:	3,191
Affiliated Companies:	14 companies
Directors and Corporate Auditors (As of March 1, 2011)	
Chairman and Representative Director	Nobuyuki Hosoda
President and Representative Director	Saishi Kimura
Representative Director and Senior Executive Director	Hideki Tamura
Executive Director	Hidenori Suzuki
Executive Director	Satoshi Miyamoto
Executive Director	Masahiko Iwamori
Director	Shigeo Ohki
Director	Masahiko Nishimura
Corporate Auditor	Eiji Tasaka
Corporate Auditor	Yoshinori Yamaoka
Corporate Auditor	Nobuhiko Kamimura



株式会社エフ・ディ・シー・プロダクツ		株式会社アスティ		株式会社三鈴		株式会社アーージュ	
代表者	代表取締役社長 田村 英樹	代表者	代表取締役社長 木村 祭氏	代表者	代表取締役社長 岡藤 一朗	代表者	代表取締役社長 石角 毅
本社所在地	〒141-8544 東京都品川区上大崎二丁目19-10	本社所在地	〒733-8641 広島市西区商工センター二丁目15-1	本社所在地	〒151-0053 東京都渋谷区代々木1-11-2代々木コミュニティービル2F	本社所在地	〒733-0833 広島市西区商工センター二丁目15-1
事業内容	ジュエリー、バッグ等の企画・製造	事業内容	アパレル及びバッグメーカー、アパレル卸	事業内容	婦人服・雑貨の企画・製造・販売	事業内容	総合衣料チェーン、レディスカジュアルチェーン等の運営
創業	1972年4月	設立	2006年9月	設立	1970年3月	設立	1996年3月
資本金	4億円	資本金	4億円	資本金	2億9,750万円	資本金	3億1,200万円
URL:	http://www.fdcp.co.jp/	URL:	http://www.asty.co.jp/	URL:	https://www.misuzugp.co.jp/	URL:	http://www.agegroup.jp/

F.D.C. Products Inc.	AST'Y Inc.	MISUZU Co., Ltd.	âge Co., Ltd.
Representative: Hideki Tamura (President and Representative Director)	Representative: Saishi Kimura (President and Representative Director)	Representative: Ichiro Okafuji (President and Representative Director)	Representative: Takeshi Ishizumi (President and Representative Director)
Address: 2-19-10 Kami-Osaki, Shinagawa-ku, Tokyo 141-8544	Address: Shoko Center 2-15-1 Nishi-ku, Hiroshima 733-8641	Address: 2nd Floor, Yoyogi Community Building, 1-11-2, Yoyogi, Shibuya-ku, Tokyo 151-0053	Address: Shoko Center 2-15-1 Nishi-ku, Hiroshima 733-0833
Business Activities: Planning and manufacture of jewelry, bags and other products	Business Activities: Apparels and bag manufacturer, wholesale of apparels	Business Activities: Planning, manufacture and sale of women's apparel and miscellaneous products	Business Activities: Sales agent for F.D.C. Products Inc. (4°C) Management of LOU (ladies' casual wear shop) Management of daily fashion brand "Pallet"
Founded: April 1972	Established: September 2006	Established: March 1970	Established: March 1996
Established: April 1986	Paid-in Capital: ¥400 million	Paid-in Capital: ¥297.5 million	Paid-in Capital: ¥312 million
Paid-in Capital: ¥400 million	URL: http://www.asty.co.jp/	URL: https://www.misuzugp.co.jp/	URL: http://www.agegroup.jp/

第2次中期経営計画
(2009年3月~2012年2月)

テーマ: 挑戦と改革
Challenge & Innovation

1 事業ポートフォリオの確立

- 「4°C」ブランド以外の各ブランドにおける利益体質の確立
- (株)アスティにおけるバッグ・アパレルOEM事業の強化
- (株)三鈴のSPA機能の強化による収益拡大
- (株)アーージュにおけるデイリーファッション事業の確立
- 各グループ子会社の利益体質強化

2 新たなマーケット、ビジネスへの挑戦

- (株)エフ・ディ・シー・プロダクツによる新たなマーケットの開拓
- (株)エフ・ディ・シー・プロダクツ販売子会社の安定運営
- (株)三鈴及び(株)アーージュによるマーケットの開拓・拡大

3 信頼性の高い企業グループの構築

- グループ内部統制体制の構築
- グループシステムの高度化と次期システムの構築準備
- 経営理念に則ったCSR経営の推進
- 人材の確保と育成

2nd Medium-Term Management Plan
(March 2009 to February 2012)

Principal Theme:
Challenge & Innovation

1 Establish a Robust Business Portfolio

- Establish a robust profit platform for each brand in addition to the 4°C brand
- Strengthen AST'Y's bag and apparel OEM business
- Increase revenues and earnings by bolstering MISUZU's SPA function
- Establish an âge group daily fashion business
- Strengthen the profit platforms of each group subsidiary company

2 Explore New Opportunities, Markets and Businesses

- Cultivate new markets, particularly through the efforts of operating arm F.D.C. Products
- Pursue stable management at F.D.C. Products' sales subsidiary companies
- Cultivate and expand markets, particularly through the efforts of operating arms MISUZU and âge

3 Become a Highly Reliable and Trustworthy Corporate Group

- Build a Group internal control system and structure
- Prepare to build sophisticated, next-generation systems for the Group
- Promote CSR management in tune with the Group's corporate philosophy
- Secure and foster human resources

経営成績（連結） / Results of Operations (Consolidated)

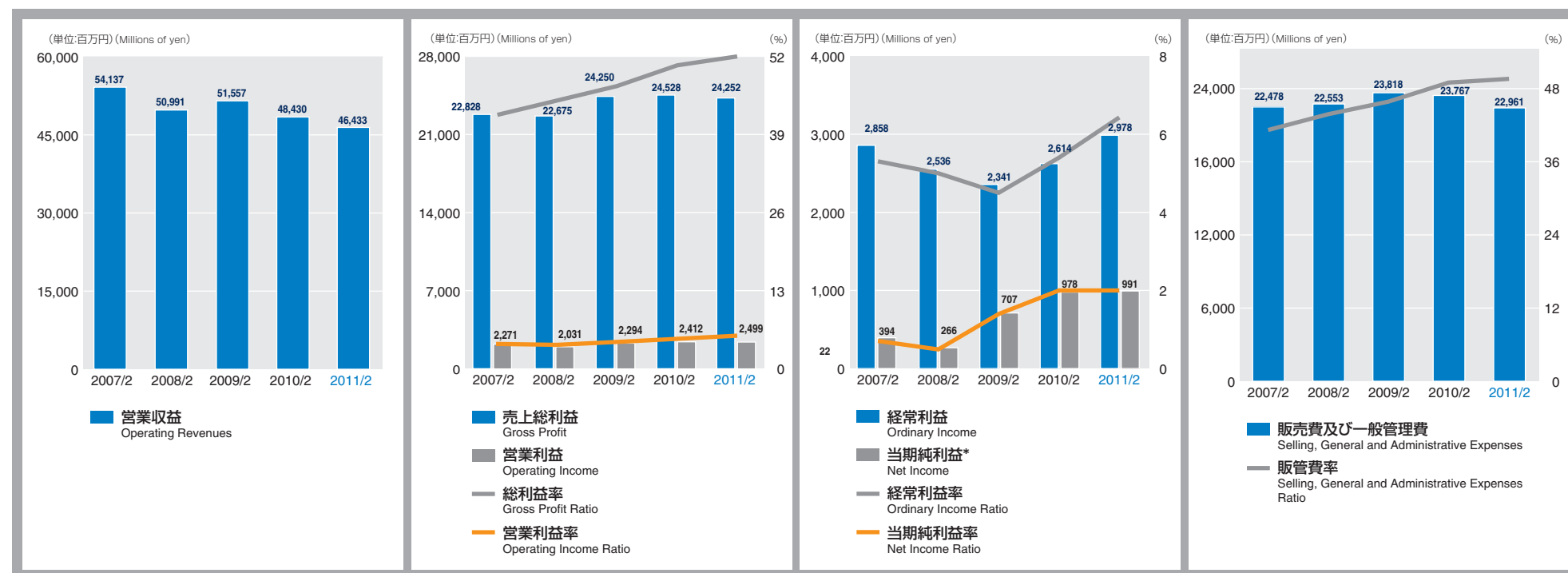
決算期	Fiscal Years Ended	2000/2	2001/2	2002/2	2003/2	2004/2	2005/2	2006/2	2007/2	2008/2	2009/2	2010/2	2011/2
営業収益（百万円）	Operating Revenues (¥ millions)	38,937	40,080	41,301	42,195	43,810	44,475	47,390	54,137	50,991	51,557	48,430	46,433
売上総利益（百万円）	Gross Profit (¥ millions)	13,002	13,848	14,134	14,796	15,951	16,295	17,142	22,828	22,675	24,250	24,528	24,252
販売費及び一般管理費（百万円）	Selling, General and Administrative Expenses (¥ millions)	12,643	13,299	13,688	14,509	15,153	15,222	16,035	22,478	22,553	23,818	23,767	22,961
営業利益（百万円）	Operating Income (¥ millions)	2,559	2,739	2,732	2,525	2,906	3,158	3,072	2,271	2,031	2,294	2,412	2,499
経常利益（百万円）	Ordinary Income (¥ millions)	2,318	1,818	2,805	2,941	3,306	3,493	3,495	2,858	2,536	2,341	2,614	2,978
当期純利益* ¹ （百万円）	Net Income (¥ millions)	513	(253)	593	1,462	1,577	1,447	22	394	266	707	978	991
総利益率* ² （%）	Gross Profit Ratio (%)	33.4	34.6	34.2	35.1	36.4	36.6	36.2	42.2	44.5	47.0	50.6	52.2
販管費率* ² （%）	Selling, General and Administrative Expenses Ratio (%)	32.5	33.2	33.1	34.4	34.6	34.2	33.8	41.5	44.2	46.2	49.1	49.5
営業利益率* ² （%）	Operating Income Ratio (%)	6.6	6.8	6.6	6.0	6.6	7.1	6.5	4.2	4.0	4.5	5.0	5.4
経常利益率* ² （%）	Ordinary Income Ratio (%)	6.0	4.5	6.8	7.0	7.5	7.9	7.4	5.3	5.0	4.5	5.4	6.4
当期純利益率* ² （%）	Net Income Ratio (%)	1.3	(0.6)	1.4	3.5	3.6	3.3	0.05	0.7	0.5	1.4	2.0	2.1

*¹ 2006年2月期は減損会計の早期適用等による特別損失を計上しています。

*¹ In fiscal year ended February 28, 2006, the Company brought forward the adoption of new accounting standards relating to the impairment of fixed assets. This resulted in an extraordinary loss.

*² 分母はすべて営業収益。

*² Denominators represent operating revenues.



財政状態(連結)/ Financial Position (Consolidated)

決算期	Fiscal Years Ended	2000/2	2001/2	2002/2	2003/2	2004/2	2005/2	2006/2	2007/2	2008/2	2009/2	2010/2	2011/2
総資産(百万円)	Total Assets (¥ millions)	44,655	42,887	41,367	42,663	44,655	46,740	46,109	57,463	53,722	55,231	52,207	51,387
純資産(百万円)	Net Assets (¥ millions)	25,249	22,721	23,240	23,745	25,249	26,766	27,058	39,877	38,056	37,101	37,338	37,816
自己資本比率(%)	Net Assets to Total Assets (%)	58	53	56	56	57	57	59	69	71	67	72	74
流動比率(%)	Current Ratio (%)	85.0	87.4	91.1	90.9	95.2	104.3	99.1	95.8	92.0	91.1	97.0	111.4
有利子負債(百万円)	Interest Bearing Debt (¥ millions)	7,245	5,860	4,863	5,683	4,922	3,827	3,045	5,193	4,762	7,593	3,580	2,482
有利子負債比率(%)	Interest Bearing Debt to Total Liabilities and Shareholders' Equity (%)	16.2	13.7	11.8	13.3	11.0	8.2	6.6	9.0	8.9	13.7	6.9	10.7
インタレスト・カバレッジ・レシオ(倍)	Interest Coverage Ratio (Times)	16	14	21	12	27	41	30	—	27	9	64	72
デット・エクイティ・レシオ(倍)	Debt-to-Equity Ratio (Times)	0.29	0.26	0.21	0.24	0.19	0.15	0.11	0.13	0.12	0.20	0.10	0.07

(注) Notes

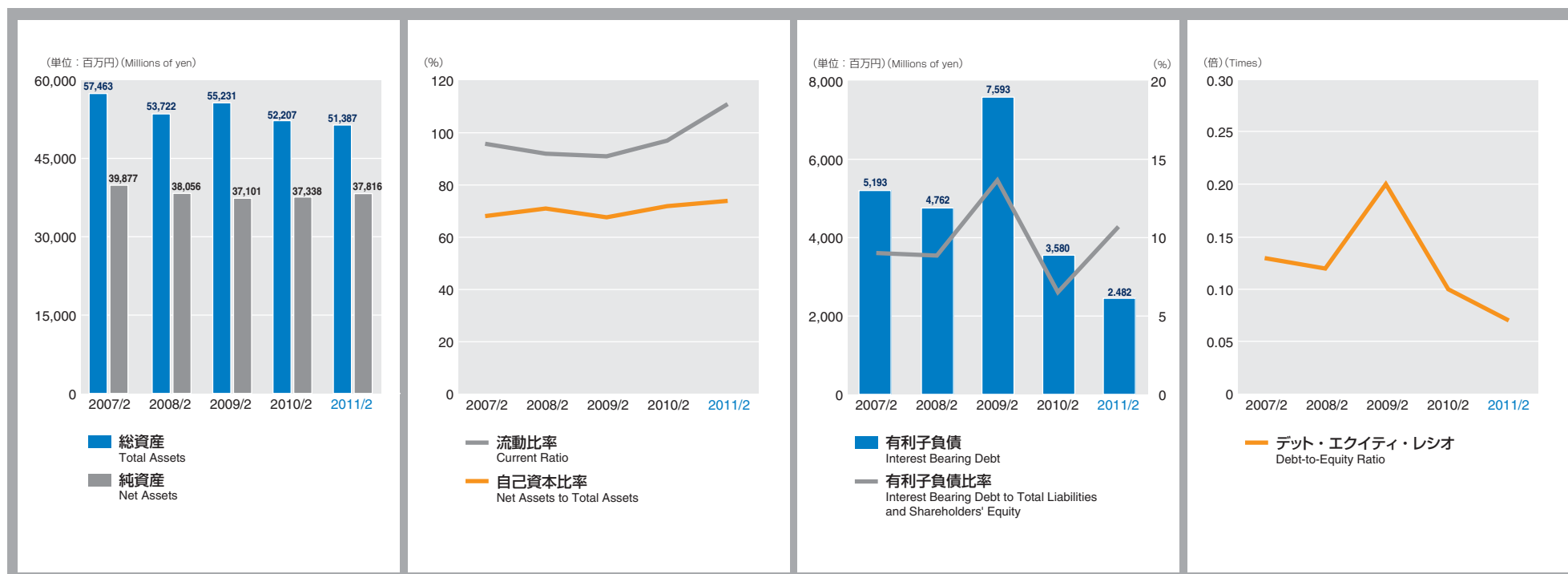
自己資本比率=純資産 ÷ 総資産 × 100 (%) Net Assets to Total Assets=(Net Assets/Total Assets)×100 (%)

流動比率=流動資産 ÷ 流動負債 × 100 (%) Current Ratio=(Current Assets/Current Liabilities)×100 (%)

有利子負債比率=(短期有利子負債+長期有利子負債) ÷ 総資産 × 100 (%) Interest Bearing Debt to Total Liabilities and Shareholders' Equity=(Short-Term Debt+Long-Term Debt)/Total Assets×100 (%)

インタレスト・カバレッジ・レシオ=営業キャッシュフロー ÷ 利払い(倍) Interest Coverage Ratio=Operating Cash Flow/Interest Payment (Times)

デット・エクイティ・レシオ(倍)=(短期有利子負債+長期有利子負債) ÷ 株主資本(倍) Debt-to-Equity Ratio=(Short-Term Debt+Long-Term Debt)/Shareholders' Equity (Times)

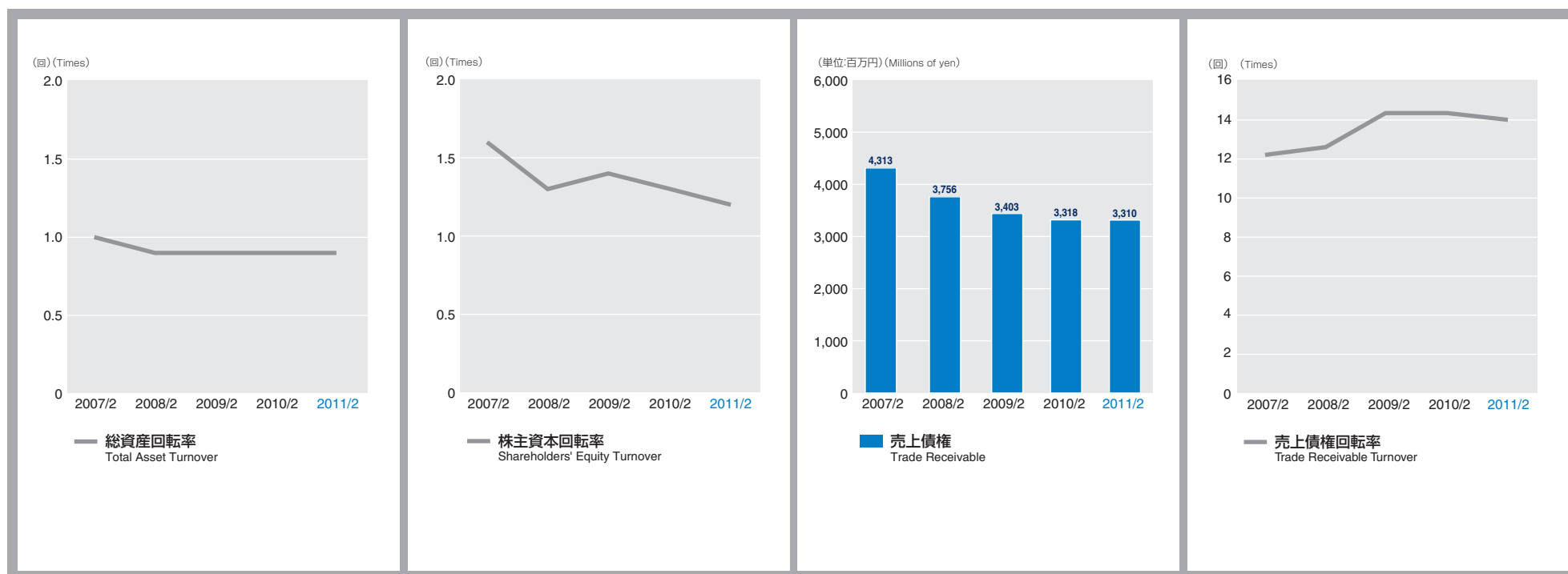


財政状態(連結)/ Financial Position (Consolidated)

決算期	Fiscal Years Ended	2000/2	2001/2	2002/2	2003/2	2004/2	2005/2	2006/2	2007/2	2008/2	2009/2	2010/2	2011/2
ROA：総資本当期純利益率 (%)	Return on Assets (%)	1.2	(0.6)	1.4	3.5	3.6	3.2	0.05	0.8	0.5	1.3	1.8	1.9
ROE：株主資本当期純利益率 (%)	Return on Equity (%)	2.1	(1.1)	2.6	6.2	6.4	5.6	0.1	1.2	0.7	1.9	2.6	2.6
総資産回転率 (回)	Total Asset Turnover (Times)	0.9	0.9	1.0	1.0	1.0	1.0	1.0	1.0	0.9	0.9	0.9	0.9
株主資本回転率 (回)	Shareholders' Equity Turnover (Times)	1.6	1.7	1.8	1.8	1.8	1.7	1.8	1.6	1.3	1.4	1.3	1.2
売上債権 (百万円)	Trade Receivable (¥ millions)	5,536	5,582	5,175	5,233	5,123	4,345	4,534	4,313	3,756	3,403	3,318	3,310
売上債権回転率 (回)	Trade Receivable Turnover (Times)	6.4	7.2	7.7	8.1	8.5	9.4	10.7	12.2	12.6	14.4	14.4	14.0

(注) Notes

ROA：総資本当期純利益率=当期純利益 ÷ 期首・期末平均総資産 × 100(%) Return on Assets=Net Income/Total Assets (Yearly Average) × 100 (%)
 ROE：株主資本当期純利益率=当期純利益 ÷ 期首・期末平均株主資本 × 100(%) Return on Equity=(Net Income/Average Total Shareholders' Equity) × 100 (%)
 総資産回転率=営業収益 ÷ 期首・期末平均総資産 (回) Total Asset Turnover=Operating Revenues/Average Total Assets (Times)
 株主資本回転率=営業収益 ÷ 期首・期末平均株主資本 (回) Shareholders' Equity Turnover=Operating Revenues/Average Shareholders' Equity (Times)
 売上債権回転率=営業収益 ÷ 期首・期末平均売上債権 (回) Trade Receivable Turnover=Operating Revenues/Average Trade Receivable (Times)



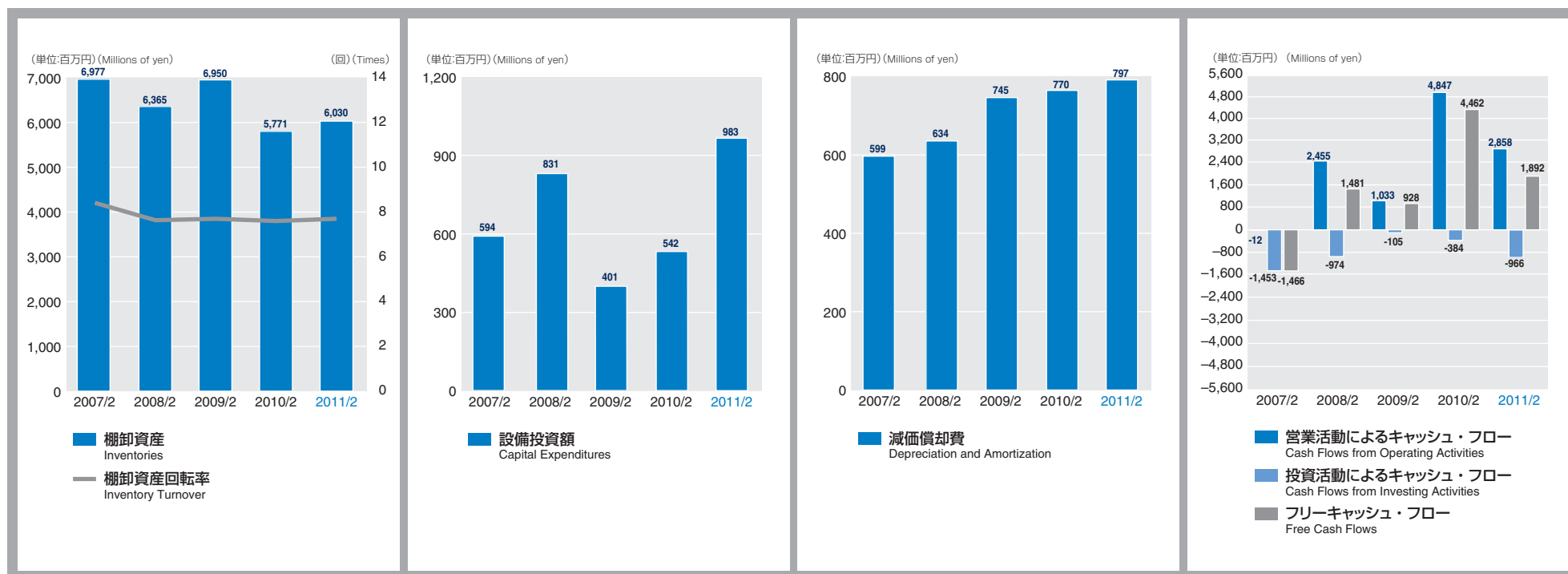
財政状態(連結)/ Financial Position (Consolidated)

決算期	Fiscal Years Ended	2000/2	2001/2	2002/2	2003/2	2004/2	2005/2	2006/2	2007/2	2008/2	2009/2	2010/2	2011/2
棚卸資産(百万円)	Inventories (¥ millions)	3,441	4,000	4,021	4,556	5,107	5,615	5,975	6,977	6,365	6,950	5,771	6,030
棚卸資産回転率(回)	Inventory Turnover (Times)	11.0	10.8	10.3	9.8	9.1	8.3	8.2	8.4	7.6	7.7	7.6	7.7
設備投資額(百万円)	Capital Expenditures (¥ millions)	745	1,513	695	2,431	1,148	588	1,192	594	831	401	542	983
減価償却費(百万円)	Depreciation and Amortization (¥ millions)	676	656	690	675	647	582	590	599	634	745	770	797
営業活動によるキャッシュ・フロー(百万円)	Cash Flows from Operating Activities (¥ millions)	3,286	1,959	2,015	1,310	2,675	3,200	1,857	(12)	2,455	1,033	4,847	2,858
投資活動によるキャッシュ・フロー(百万円)	Cash Flows from Investing Activities (¥ millions)	(152)	(1,446)	(532)	(2,738)	(1,505)	(106)	(2,453)	(1,453)	(974)	(105)	(384)	(966)
フリーキャッシュ・フロー(百万円)	Free Cash Flows (¥ millions)	3,134	512	1,483	(1,428)	1,170	3,093	(595)	(1,466)	1,481	928	4,462	1,892

(注) Notes

棚卸資産回転率=営業収益÷期首・期末平均棚卸資産(回) Inventory Turnover=Operating Revenues/Average Inventories (Times)

フリーキャッシュ・フロー=営業活動によるキャッシュ・フロー+投資活動によるキャッシュ・フロー(百万円) Free Cash Flows=Cash Flows from Operating Activities+Cash Flows from Investing Activities (¥ millions)

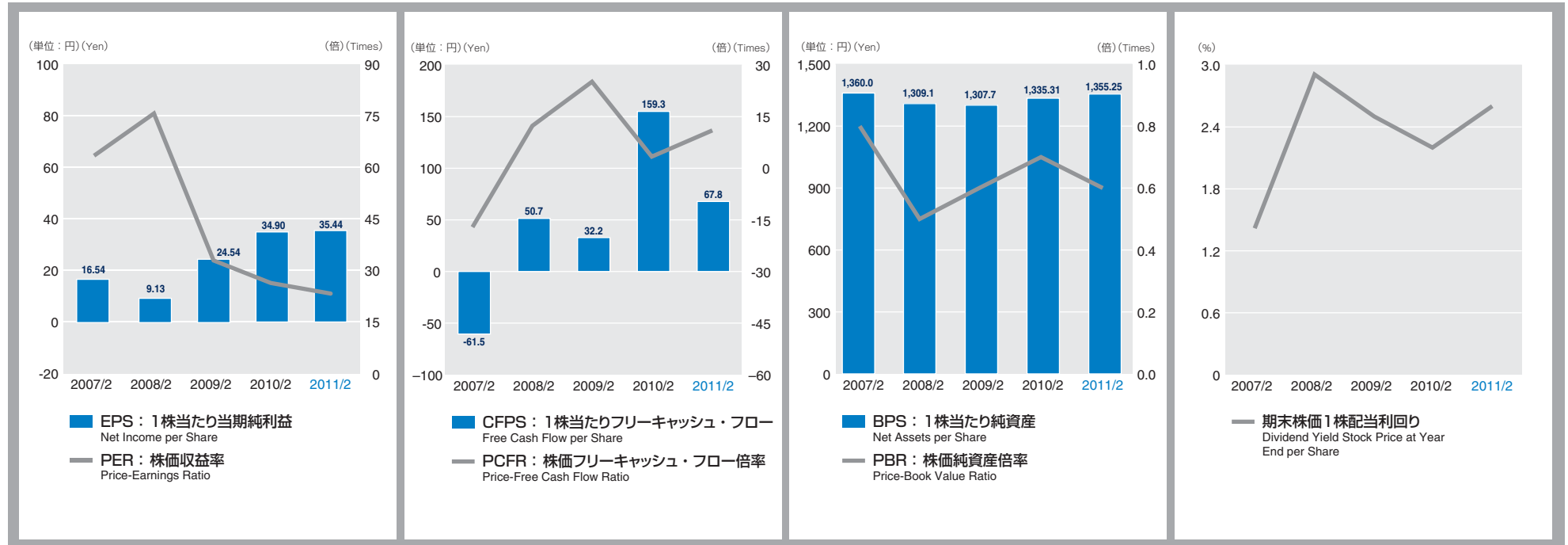


1 株当たり情報 / Per Share Information

決算期	Fiscal Years Ended	2000/2	2001/2	2002/2	2003/2	2004/2	2005/2	2006/2	2007/2	2008/2	2009/2	2010/2	2011/2
連結	Consolidated												
EPS：1株当たり当期純利益（円）	Net Income per Share（円）	25.81	(12.73)	29.81	76.29	80.02	73.05	(1.37)	16.54	9.13	24.54	34.90	35.44
PER：株価収益率（倍）	Price-Earnings Ratio (Times)	29.8	—	33.5	10.9	10.5	14.2	—	63.2	75.1	32.9	26.1	21.4
CFPS：1株当たりフリーキャッシュ・フロー（円）	Free Cash Flow per Share（円）	157.46	25.78	74.52	(74.52)	61.19	161.79	(31.1)	(61.5)	50.7	32.2	159.3	67.8
PCFR：株価フリーキャッシュ・フロー倍率（倍）	Price-Free Cash Flow Ratio (Times)	4.9	29.4	13.4	(11.1)	13.7	6.4	(38.8)	(17.0)	13.5	25.1	5.7	11.2
BPS：1株当たり純資産（円）	Net Assets per Share（円）	1,237.1	1,141.6	1,168.1	1,239.6	1,317.8	1,396.7	1,411.5	1,360.0	1,309.1	1,307.7	1,335.31	1,355.25
PBR：株価純資産倍率（倍）	Price-Book Value Ratio (Times)	0.6	0.7	0.9	0.7	0.6	0.7	0.9	0.8	0.5	0.6	0.7	0.6
単体	Non-Consolidated												
1株当たり年間配当金（円）	Cash Dividends Applicable to the Year per Share（円）	8.5	10	10	11	13	15	15	15	20	20	20	20
期末株価1株配当利回り（%）	Dividend Yield Stock Price at Year End per Share（%）	1.1	1.3	1.0	1.3	1.5	1.4	1.2	1.4	2.9	2.5	2.2	2.6
配当性向（%）	Dividend Payout Ratio（%）	32.9	—	33.5	14.4	16.3	20.5	—	90.7	226.5	81.5	57.3	56.4
発行済株式数（千株）	Number of Shares Issued and Outstanding (Thousands)	19,906	19,906	19,906	19,906	19,906	19,906	19,906	30,631	30,631	30,631	30,631	30,331
（自己株式控除後）	After Deduction from Treasury Stock (Thousands)	19,905	19,903	19,896	19,887	19,886	19,883	19,883	30,586	30,191	29,486	29,080	29,017
期末株価（円）	Stock Price at Year-End（円）	770	758	1,000	830	840	1,036	1,208	1,045	686	807	910	760

(注) Notes

1 株当たり当期純利益（円）= 当期純利益 ÷ 期中平均株式数 Net Income per Share=Net Income/Average Total Number of Shares Issued and Outstanding（円）
 株価収益率=期末株価 ÷ 1株当たり当期純利益（倍） Price-Earnings Ratio=Stock Price at Year-End/Net Income per Share (Times)
 1株当たりフリーキャッシュ・フロー=フリーキャッシュ・フロー ÷ 期中平均株式数（円） Free Cash Flows per Share=Free Cash Flows/Average Total Number of Shares Issued（円）
 株価フリーキャッシュ・フロー倍率=期末株価 ÷ 1株当たりフリーキャッシュ・フロー（倍） Price-Free Cash Flow Ratio=Stock Price at Year-End/Free Cash Flows per Share (Times)
 1株当たり純資産=期末株主資本 ÷ 期末発行済株式数（円） Net Assets per Share=Net Assets/Total Number of Shares Issued and Outstanding（円）
 株価純資産倍率=期末株価 ÷ 1株当たり純資産（倍） Price-Book Value Ratio=Stock Price at Year-End/Net Assets per Share (Times)
 期末株価1株配当利回り=1株当たり年間配当金 ÷ 期末株価 × 100（%） Dividend Yield at Year-End per Share=Cash Dividends Applicable to the Year per Share /Stock Price at Year-End × 100（%）
 配当性向=1株当たり配当金額 ÷ 1株当たり当期純利益 × 100（%） Dividend Payout Ratio=(Total Cash Dividends per Share/Net Income per Share) × 100（%）

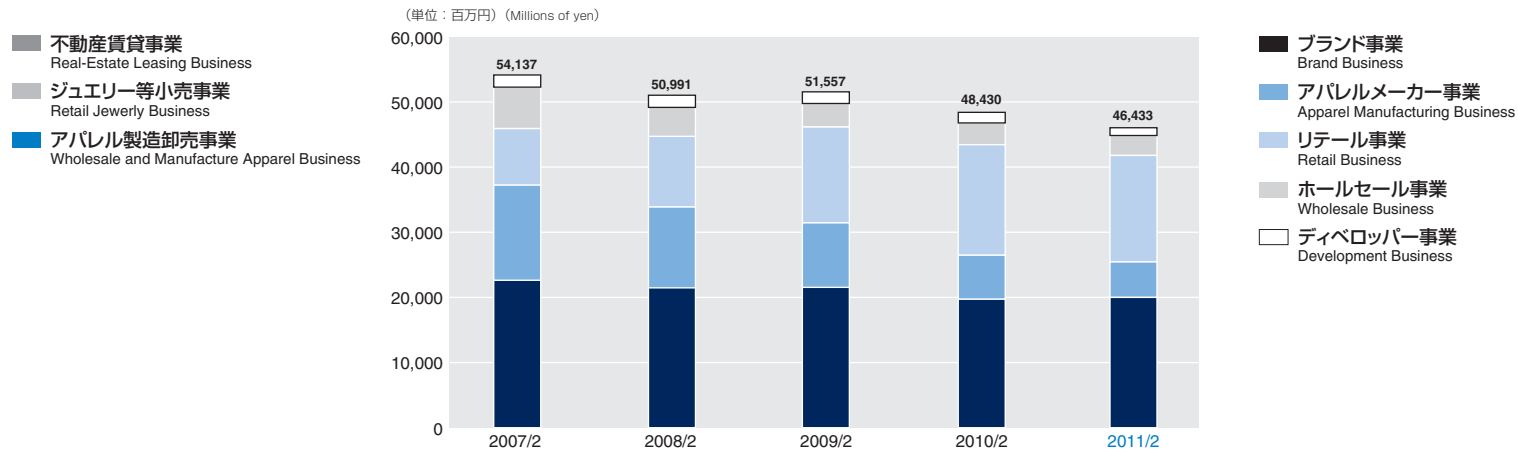


セグメント情報 / Segment Information

決算期	Fiscal Years Ended	2000/2	2001/2	2002/2	2003/2	2004/2	2005/2	2006/2	2007/2	2008/2	2009/2	2010/2	2011/2
連結売上高 (百万円)	Consolidated Net Sales (¥ millions)	39,937	40,080	41,301	42,195	43,810	44,475	47,390	54,137	50,991	51,557	48,430	46,433
セグメント別売上高													
Net Sales by Segment													
アパレル製造卸売事業 (百万円)	Wholesale and Manufacture Apparel Business (¥ millions)	22,047	22,008	22,552	22,936	21,095	21,448	23,239	—	—	—	—	—
ジュエリー等小売事業 (百万円)	Retail Jewelry Business (¥ millions)	14,688	15,881	16,462	17,019	20,606	20,942	22,164	—	—	—	—	—
不動産賃貸事業 (百万円)	Real-Estate Leasing Business (¥ millions)	2,200	2,190	2,286	2,239	2,108	2,084	1,986	—	—	—	—	—
ブランド事業 (百万円)	Brand Business (¥ millions)	—	—	—	—	—	—	—	22,633	21,662	21,556	19,723	20,288
アパレルメーカー事業 (百万円)	Apparel Manufacturing Business (¥ millions)	—	—	—	—	—	—	—	14,625	12,360	9,924	6,755	5,544
リテール事業 (百万円)	Retail Business (¥ millions)	—	—	—	—	—	—	—	8,629	10,968	14,715	16,972	16,346
ホールセール事業 (百万円)	Wholesale Business (¥ millions)	—	—	—	—	—	—	—	6,369	4,093	3,571	3,346	3,061
ディベロッパー事業 (百万円)	Development Business (¥ millions)	—	—	—	—	—	—	—	1,879	1,906	1,788	1,632	1,192
連結営業利益 (百万円)	Consolidated Operating Income (¥ millions)	2,559	2,739	2,732	2,525	2,906	3,158	3,072	2,271	2,031	2,294	2,412	2,499
セグメント別営業利益													
Operating Income by Segment													
アパレル製造卸売事業 (百万円)	Wholesale and Manufacture Apparel Business (¥ millions)	112	255	178	328	126	352	127	—	—	—	—	—
ジュエリー等小売事業 (百万円)	Retail Jewelry Business (¥ millions)	1,305	1,467	1,537	1,245	1,669	1,803	2,097	—	—	—	—	—
不動産賃貸事業 (百万円)	Real-Estate Leasing Business (¥ millions)	1,392	1,285	1,191	1,141	1,125	1,123	1,050	—	—	—	—	—
消去又は全社 (百万円)	Eliminations and Corporate (¥ millions)	(250)	(269)	(175)	(189)	(15)	(121)	(203)	—	—	—	—	—
ブランド事業 (百万円)	Brand Business (¥ millions)	—	—	—	—	—	—	—	2,396	1,990	2,198	2,343	2,710
アパレルメーカー事業 (百万円)	Apparel Manufacturing Business (¥ millions)	—	—	—	—	—	—	—	70	(331)	(276)	(32)	(82)
リテール事業 (百万円)	Retail Business (¥ millions)	—	—	—	—	—	—	—	47	(18)	151	(68)	(6)
ホールセール事業 (百万円)	Wholesale Business (¥ millions)	—	—	—	—	—	—	—	(108)	(17)	(19)	(91)	(51)
ディベロッパー事業 (百万円)	Development Business (¥ millions)	—	—	—	—	—	—	—	864	777	592	570	218
消去又は全社 (百万円)	Eliminations and Corporate (¥ millions)	—	—	—	—	—	—	—	(998)	(368)	(352)	(309)	(289)

連結 / Consolidated

セグメント別売上高 / Sales by Segment



事業会社別の概況 (店舗の状況) / Outline of the Operating Companies (Store Information)

(株) エフ・ディ・シー・プロダクツ (連結) F.D.C. Products Inc. (Consolidated)

■売上高前年比 YoY Net Sales (%)		2010	2011
全社合計	Group total	90.7	101.7
既存店合計	Existing store total	90.8	95.7

■客数・客単価前年比 YoY Number of Customers and Sales per Customer (%)		2010	2011
全社合計	Group total	113.6	100.7
客数	Number of customers	83.0	102.3
客単価	Sales per customer		

■部門別売上高前年比 YoY Net Sales by Business Segment (%)		2010		2011	
		既存店 Existing stores	合計 Total	既存店 Existing stores	合計 Total
ジュエリー	Jewelry	91.8	93.3	95.7	106.1
バッグ	Bags	78.6	76.6	93.3	56.4
飲食	Restaurants	91.4	81.2	97.9	86.7
全社合計	Group total	90.8	90.7	95.7	101.7
既存事業合計	Existing business total	90.8	91.3	95.7	101.7

■店舗数 (月末時点) Number of Stores (As of the end of the month)		◎商品取扱店舗数 Number of Stores Handling Products	
		2010	2011
ジュエリー	Jewelry	139	154
バッグ	Bags	24	21
飲食	Restaurants	21	17

◎商品取扱店舗数 Number of Stores Handling Products		2010	2011
直営店	Directly operated stores	24	50
インショップ直営店	In-shop directly operated stores	115	94
販売代行店	Agency stores	22	25
FC店	Franchise stores	11	12
合計	Total	172	181

(株) アスティ AS'TY Inc.

■売上高前年比 YoY Net Sales (%)		2010	2011
既存事業合計	Existing business total	81.6	97.2

(株) 三鈴 MISUZU Co., Ltd.

■売上高前年比 YoY Net Sales (%)		2010	2011
全社合計	Group total	92.9	94.9
既存店合計	Existing store total	89.0	94.1

■客数・客単価前年 YoY Number of Customers and Sales per Customer (%)		2010	2011
全社合計	Group total	98.1	95.5
客数	Number of customers	90.8	98.6
客単価	Sales per customer		

■三鈴店舗数		2010	2011
Rew de Rew Grace	Rew de Rew Grace	4	4
Rew de Rew	Rew de Rew	15	18
Reiri dea	Reiri dea	13	10
Luv Diva	Luv Diva	6	4
LD prime	LD prime	18	21
Pin Curl	Pin Curl	22	22
Double Dazzle	Double Dazzle	4	3
DADA	DADA	—	14
その他	Other	3	2
全社	Group total	85	98

(注)
2010年のDADAは、株式会社メイに帰属していたため、店舗数は記載しておりません。
Notes
The DADA retail business formed a part of May Co., Ltd. in 2010. Accordingly, the number of DADA stores has not been listed.

(株) アージュ âge Co., Ltd.

■売上高前年比 YoY Net Sales (%)		2010	2011
既存事業合計	Existing business total	95.6	95.8

■店舗数 Number of Stores		2010	2011
LOU	LOU	21	23
パレット	PALLET	53	51
その他	Other	12	13
全社	Group total	86	87

連結貸借対照表 / Consolidated Balance Sheets

(千円 / Thousands of yen)

決算期	Fiscal Years Ended	2000/2	2001/2	2002/2	2003/2	2004/2	2005/2	2006/2	2007/2	2008/2	2009/2	2010/2	2011/2
流動資産	Current Assets	11,771,995	11,296,155	11,181,900	11,032,764	11,796,015	12,608,784	12,225,808	13,146,770	11,620,205	12,968,737	11,263,924	10,873,038
現金及び預金	Cash and Deposits	1,716,708	1,295,403	1,496,495	789,701	946,227	1,914,504	977,709	682,481	649,085	895,894	518,261	452,901
受取手形及び売掛金	Notes and Accounts Receivable-Trade	5,536,840	5,582,550	5,175,736	5,233,232	5,123,377	4,345,446	4,534,502	4,313,830	3,756,304	3,403,014	3,318,504	3,310,090
有価証券	Short-term Investment Securities	720,007	25,002	—	—	—	—	—	—	—	—	—	—
たな卸資産	Inventories	3,441,345	4,000,775	4,021,374	4,556,079	5,107,430	5,615,379	5,975,141	6,977,287	6,365,826	6,950,046	5,771,771	6,030,277
繰延税金資産	Deferred Tax Assets	—	193,806	182,812	281,188	459,293	488,684	399,138	524,028	473,422	1,077,401	636,079	480,552
前渡金	Advance Payments	1,667	602	351	4,749	6,585	4,259	1,348	60,480	5,378	23,254	7,972	7,940
未収入金	Accounts Receivable-Other	181,743	120,206	92,032	48,346	18,053	44,395	87,567	99,496	86,247	93,644	804,594	223,361
その他	Other	232,556	114,753	242,471	177,535	197,118	256,642	264,637	502,124	294,388	535,821	215,955	372,597
貸倒引当金	Allowance for Doubtful Accounts	(58,875)	(36,945)	(29,375)	(58,069)	(62,070)	(60,527)	(14,236)	(12,958)	(10,448)	(10,340)	(9,213)	(4,683)
固定資産	Noncurrent Assets	30,409,485	31,536,581	30,169,369	31,630,437	32,858,995	34,131,764	33,883,932	44,316,285	42,102,503	42,262,422	40,943,144	40,514,185
有形固定資産	Property, Plant and Equipment	13,852,519	14,764,721	14,643,169	16,237,369	16,675,060	16,336,360	13,197,582	12,968,793	12,317,953	12,631,724	11,788,005	12,169,588
建物及び構築物（純額）	Buildings and Structures, Net	7,095,375	7,500,432	7,415,059	7,111,916	7,605,559	7,287,783	7,005,812	6,765,465	6,202,332	6,228,442	5,417,218	5,707,350
土地	Land	6,285,998	6,735,998	6,726,334	8,643,950	8,617,107	8,624,946	5,781,879	5,783,339	5,783,339	6,060,262	5,994,953	5,994,953
建設仮勘定	Construction in Progress	—	33,381	20,824	70,150	52,538	—	—	2,083	3,781	2,997	52,926	4,376
その他	Other	471,144	494,909	480,951	411,351	399,854	423,630	409,891	417,904	328,500	340,022	322,908	462,909
無形固定資産	Intangible Assets	139,366	168,207	297,963	356,100	347,089	566,090	741,039	10,645,376	9,939,493	9,463,621	8,740,480	8,051,273
商標権	Right of Trademark	24,102	18,361	13,047	9,937	7,916	5,895	6,846	5,112	2,867	3,538	3,035	2,533
営業権	Business Rights	—	—	—	—	—	—	235,850	182,450	—	—	—	—
連結調整勘定	Consolidated Adjustment Account	23,195	—	—	215,073	175,383	426,110	308,966	10,086,106	—	—	—	—
のれん	Goodwill	—	—	—	—	—	—	—	—	9,281,949	8,922,521	8,327,875	7,795,492
その他	Other	92,067	149,845	284,915	131,088	163,789	134,084	189,376	371,707	654,676	537,561	409,570	253,246
投資その他の資産	Investments and Other Assets	16,417,600	16,603,652	15,228,236	15,036,968	15,836,845	17,229,312	19,945,310	20,702,116	19,845,055	20,167,076	20,414,659	20,293,323
投資有価証券	Investment Securities	12,953,490	13,204,918	11,949,298	11,266,265	12,205,076	12,830,958	14,514,854	15,469,133	14,644,002	13,319,315	13,359,089	13,462,293
長期貸付金	Long-term Loans Receivables	170,333	144,734	123,292	112,264	107,540	95,552	657,347	59,585	58,595	57,316	58,105	48,389
前払年金費用	Prepaid Pension Cost	—	—	—	—	635,016	1,671,431	1,764,934	1,865,068	1,977,572	2,043,372	1,997,008	1,992,984
投資不動産	Real Estate for Investment	—	—	—	—	—	—	571,456	566,486	561,657	821,910	815,435	810,784
繰延税金資産	Deferred Tax Assets	—	—	165,508	118,373	166,386	171,135	114,501	125,778	146,913	543,394	931,951	677,560
再評価に係る繰延税金資産	Deferred Tax Assets for Land Revaluation	366,166	279,910	269,882	279,910	256,917	256,064	—	—	—	—	—	—
その他	Other	3,787,009	3,815,988	3,773,036	4,267,583	3,342,035	3,077,772	3,055,196	3,307,982	3,177,278	4,090,223	3,932,131	3,900,353
貸倒引当金	Allowance for Doubtful Accounts	(859,399)	(841,900)	(1,052,782)	(1,007,429)	(876,127)	(873,602)	(732,980)	(691,919)	(720,963)	(708,455)	(679,060)	(599,044)
資産合計	Total Assets	42,287,980	42,887,504	41,367,246	42,663,202	44,655,011	46,740,548	46,109,741	57,463,056	53,722,708	55,231,159	52,207,068	51,387,224

連結貸借対照表 / Consolidated Balance Sheets

(千円 / Thousands of yen)

決算期	Fiscal Years Ended	2000/2	2001/2	2002/2	2003/2	2004/2	2005/2	2006/2	2007/2	2008/2	2009/2	2010/2	2011/2
流動負債	Current Liabilities	13,853,600	12,920,953	12,279,259	12,125,788	12,392,816	12,088,088	12,339,776	13,717,159	12,629,699	14,229,484	11,613,006	9,764,710
支払手形及び買掛金	Notes and Accounts Payable-Trade	6,024,820	7,071,798	6,723,807	6,227,368	6,304,840	6,022,648	6,204,419	5,166,432	4,842,145	3,880,093	3,915,845	4,138,660
短期借入金	Short-term Loans Payable	3,391,415	3,236,539	3,320,920	3,725,269	3,228,016	3,097,023	2,540,324	4,600,502	4,327,928	6,525,985	3,034,404	1,676,604
一年内返済予定社債	Current Portion of Bonds	1,613,100	—	—	—	—	—	—	—	90,000	295,000	10,000	—
未払法人税等	Income Taxes Payable	858,034	977,003	535,667	522,811	1,019,893	989,779	642,802	876,532	732,057	704,192	1,097,582	941,945
賞与引当金	Provision for Bonuses	506,339	468,119	481,225	474,559	561,667	497,175	453,875	403,209	427,164	415,805	407,668	469,848
その他	Other	1,459,891	1,167,491	1,217,638	1,175,779	1,278,398	1,481,461	2,498,354	2,670,481	2,210,403	2,408,407	3,147,506	2,537,627
固定負債	Noncurrent Liabilities	3,222,726	5,646,769	3,885,141	4,605,215	4,561,908	5,037,983	3,668,258	3,868,656	3,036,678	3,900,427	3,255,097	3,806,236
社債	Bonds Payable	—	—	—	—	—	100,000	100,000	360,000	230,000	45,000	—	—
長期借入金	Long-term Loans Payable	2,037,296	2,447,315	1,380,539	1,805,107	1,532,336	580,679	272,231	110,940	12,023	638,158	453,754	733,130
預り保証金	Guarantee Deposits Received	835,960	685,848	600,194	557,518	509,738	536,787	462,894	426,827	332,272	291,997	255,769	390,340
繰延税金負債	Deffered Tax Liabilities	—	1,365,282	1,174,834	1,571,161	1,841,087	1,989,182	1,541,394	2,111,467	1,637,129	1,792,660	1,452,742	796,121
退職給付引当金	Provision for Retirement Benefits	181,474	208,138	233,183	249,941	252,050	1,279,753	313,141	317,459	328,426	472,161	512,957	533,050
役員退職慰労引当金	Provision for Directors' Retirement Benefits	167,995	304,980	358,041	387,474	403,328	539,437	626,140	350,137	395,142	339,538	332,414	369,511
退職年金未払金	Accounts Payable on Retirement Pension	—	504,313	—	—	—	—	—	—	—	—	—	—
資産除去債務	Asset Retirement Obligations	—	—	—	—	—	—	—	—	—	—	—	765,013
その他	Other	—	130,890	138,348	34,012	23,367	12,142	352,456	191,823	101,683	320,911	247,459	219,067
負債合計	Total Liabilities	17,076,327	18,567,722	16,164,400	16,731,003	16,954,725	17,126,071	16,008,035	17,585,816	15,666,377	18,129,911	14,868,103	13,570,946
少数株主持分	Minority Interests	587,515	1,598,085	1,962,167	2,186,778	2,450,937	2,848,433	3,043,686	—	—	—	—	—
資本金	Capital Stock	2,486,520	2,486,520	2,486,520	2,486,520	2,486,520	2,486,520	2,486,520	—	—	—	—	—
資本剰余金	Capital Surplus	5,456,343	5,435,590	5,437,227	5,437,227	5,437,227	5,437,230	5,437,230	—	—	—	—	—
利益剰余金	Retained Earnings	17,189,496	15,189,507	15,710,226	16,925,627	18,248,446	19,389,117	19,057,863	—	—	—	—	—
土地再評価差額金	Revaluation Reserve for Land	(506,905)	(387,496)	(373,613)	(387,496)	(376,040)	(362,830)	(614,198)	—	—	—	—	—
その他有価証券評価差額金	Valuation Difference on Available-for-Sale Securities	—	—	—	(68,817)	159,045	523,666	1,377,568	—	—	—	—	—
為替換算調整勘定	Foreign Currency Translation Adjustment	—	—	(10,223)	(6,182)	(22,410)	(27,013)	(12,164)	—	—	—	—	—
自己株式	Treasury Stock	(1,317)	(2,427)	(9,459)	(641,459)	(683,442)	(680,647)	(674,800)	—	—	—	—	—
資本合計	Total Shareholders' Equity	24,624,137	22,721,695	23,240,677	23,745,419	25,249,347	26,766,043	27,058,020	—	—	—	—	—
負債・少数株主持分・資本合計	Total Liabilities, Minority Interests and Shareholders' Equity	42,287,980	42,887,504	41,367,246	42,663,202	44,655,011	46,740,548	46,109,741	—	—	—	—	—
(純資産の部)	(NET ASSETS)												
株主資本	Shareholders' Equity	—	—	—	—	—	—	—	38,964,613	38,130,249	37,399,019	37,558,372	37,973,769
資本金	Capital Stock	—	—	—	—	—	—	—	2,486,520	2,486,520	2,486,520	2,486,520	2,486,520
資本剰余金	Capital Surplus	—	—	—	—	—	—	—	18,349,719	18,300,303	18,300,303	18,300,326	18,300,303
利益剰余金	Retained Earnings	—	—	—	—	—	—	—	19,013,290	18,517,443	18,322,785	18,871,004	19,130,875
自己株式	Treasury Stock	—	—	—	—	—	—	—	(884,916)	(1,174,018)	(1,710,590)	(2,099,478)	(1,943,930)
評価・換算差額等	Valuation and Translation Adjustments	—	—	—	—	—	—	—	897,544	(76,985)	(300,049)	(221,820)	(164,969)
その他有価証券評価差額金	Valuation Difference on Available-for-Sale Securities	—	—	—	—	—	—	—	1,525,410	566,971	(29,879)	72,924	145,764
繰延ヘッジ損益	Deferred Gains or Losses on Hedge	—	—	—	—	—	—	—	(308)	(38,400)	10,845	(2,223)	(2,555)
土地再評価差額金	Revaluation Reserve for Land	—	—	—	—	—	—	—	(611,816)	(614,198)	(264,512)	(264,512)	(264,512)
為替換算調整勘定	Foreign Currency Translation Adjustment	—	—	—	—	—	—	—	(15,740)	8,641	(16,503)	(28,008)	(43,665)
新株予約権	Subscription Rights to Shares	—	—	—	—	—	—	—	—	—	—	—	5,483
少数株主持分	Minority Interests	—	—	—	—	—	—	—	15,081	3,066	2,278	2,412	1,994
純資産合計	Total Net Assets	—	—	—	—	—	—	—	39,877,240	38,056,330	37,101,248	37,338,965	37,808,800
負債及び純資産合計	Total Liabilities and Net Assets	—	—	—	—	—	—	—	57,463,056	53,722,708	55,231,159	52,207,068	51,387,224

連結損益計算書 / Consolidated Statements of Income

(千円 / Thousands of yen)

決算期	Fiscal Years Ended	2000/2	2001/2	2002/2	2003/2	2004/2	2005/2	2006/2	2007/2	2008/2	2009/2	2010/2	2011/2
営業収益	Operating Revenues	38,937,114	40,080,353	41,301,201	42,195,284	43,810,178	44,475,677	47,390,026	54,137,849	50,991,447	51,557,193	48,430,082	46,433,874
売上高	Net Sales	36,736,139	37,889,488	39,014,967	39,955,693	41,702,085	42,390,829	45,424,615	52,216,262	49,080,776	49,694,343	46,779,521	45,225,042
売上総利益	Gross Profit	13,002,227	13,847,942	14,134,667	14,796,076	15,951,728	16,295,825	17,142,685	22,828,894	22,675,168	24,250,273	24,528,910	24,252,587
その他営業収入	Other Operating Revenue	2,200,975	2,190,865	2,286,234	2,239,591	2,108,093	2,084,848	1,965,411	1,921,587	1,910,670	1,862,849	1,650,561	1,208,832
営業総利益	Operating Gross Profit	15,203,202	16,038,808	16,420,901	17,035,667	18,059,822	18,380,673	19,108,097	24,750,482	24,585,838	26,113,123	26,179,471	25,461,419
人件費	Payroll Allowance	6,309,764	6,450,218	6,641,888	7,050,822	7,405,018	7,107,747	7,346,460	7,624,068	7,795,974	8,480,117	9,028,780	8,683,635
その他経費	Other Expenses	5,657,514	6,192,919	6,355,282	6,783,919	7,100,904	7,532,033	8,156,679	14,255,269	14,123,253	14,592,887	13,967,670	13,480,682
減価償却費	Depreciation and Amortization	676,176	656,385	690,822	675,170	647,626	582,409	532,847	599,354	634,739	745,232	770,808	797,613
販管費計	Total Selling and Administrative Expenses	12,643,454	13,299,522	13,687,992	14,509,911	15,153,548	15,222,189	16,035,986	22,478,691	22,553,967	23,818,237	23,767,259	22,961,930
営業利益	Operating Income	2,559,748	2,739,285	2,732,908	2,525,756	2,906,273	3,158,484	3,072,110	2,271,790	2,031,871	2,294,885	2,412,212	2,499,478
営業外収益	Non-Operating Income	246,226	176,811	405,078	673,575	537,334	488,828	530,973	721,005	648,251	275,674	306,112	545,674
営業外費用	Non-Operating Expenses	487,104	1,097,268	332,381	257,456	137,301	153,904	107,095	134,782	143,812	228,669	103,807	67,022
経常利益	Ordinary Income	2,318,770	1,818,829	2,805,605	2,941,874	3,306,307	3,493,408	3,495,988	2,858,013	2,536,310	2,341,891	2,614,517	2,978,130
特別利益	Extraordinary Income	39,036	335,376	1,001,005	915,181	67,615	197,597	455,301	18,406	160,459	124,787	897,412	24,004
特別損失	Extraordinary Loss	672,113	1,119,116	2,011,763	875,769	344,800	502,350	3,250,653	584,015	1,084,471	916,863	1,414,659	962,762
税金等調整前当期純利益	Income before Income Taxes and Minority Interests	1,685,693	1,035,089	1,794,848	2,981,287	3,029,122	3,188,655	700,635	2,292,404	1,612,298	1,549,815	2,097,270	2,039,384
法人税等	Income Taxes	1,092,955	1,086,794	913,129	1,285,632	1,153,219	1,372,434	206,604	1,734,769	1,343,915	842,902	1,119,095	1,048,538
少数株主利益 (損失)	Minority Interests in Income (Loss)	78,922	201,625	288,370	233,628	298,041	369,126	471,522	163,611	1,842	(787)	133	(417)
当期純利益	Net Income	513,815	(253,330)	593,348	1,462,026	1,577,862	1,447,094	22,508	394,023	266,541	707,701	978,040	991,263

連結キャッシュフロー計算書 / Consolidated Statements of Cash Flows

(千円 / Thousands of yen)

決算期	Fiscal Years Ended	2000/2	2001/2	2002/2	2003/2	2004/2	2005/2	2006/2	2007/2	2008/2	2009/2	2010/2	2011/2
I 営業活動によるキャッシュ・フロー： I Cash Flows from Operating Activities													
税金等調整前当期純利益	Net Income before Income Taxes	1,685,693	1,035,089	1,794,848	2,981,287	3,029,122	3,188,655	700,635	2,292,404	1,612,298	1,549,815	2,097,270	2,039,384
減価償却費	Depreciation	676,176	717,705	690,822	705,630	671,572	635,709	590,791	660,725	683,684	775,851	814,760	840,853
減損損失	Impairment Loss	—	—	—	—	—	—	2,866,352	193,034	520,788	309,200	186,005	247,558
連結調整勘定償却額	Amortization of Consolidated Adjustment Account	—	(6,029)	(21,913)	49,387	49,351	57,903	134,655	429,780	—	—	—	—
のれん償却額	Amortization of Goodwill	—	—	—	—	—	—	—	—	647,095	693,086	594,646	532,382
固定資産臨時償却費	Non-recurring Depreciation on Noncurrent Assets	—	—	—	—	—	—	—	—	—	—	459,986	—
資産除去債務会計基準の適用に伴う影響額	Loss on Adjustment for Changes of Accounting Standard for Asset Retirement Obligations	—	—	—	—	—	—	—	—	—	—	—	490,338
貸倒引当金の増減額 (()は減少)	Increase (Decrease) in Allowance for Doubtful Accounts	(180,708)	(39,429)	203,312	(17,878)	(127,300)	(25,425)	(192,718)	(43,863)	26,534	(24,529)	(30,521)	(84,545)
賞与引当金の増減額 (()は減少)	Increase (Decrease) in Provision for Bonuses	16,725	(38,220)	13,106	(9,246)	87,108	(79,645)	(48,107)	(9,740)	23,992	(51,349)	(8,137)	62,179
退職給付信託設定益 (()は減少)	Gain on Contribution of Securities to Retirement Benefit Trust	—	—	(949,755)	—	—	—	—	—	—	—	—	—
退職給付費用	Retirement Benefit Expenses	—	—	1,204,043	—	—	—	—	—	—	—	—	—
退職給付引当金の増減額 (()は減少)	Increase (Decrease) in Provision for Retirement Benefits	33,411	26,663	(46,261)	22,742	96,938	(9,901)	(760,347)	(110,438)	(101,215)	(36,513)	87,032	25,583
その他引当金の増減額 (()は減少)	Increase (Decrease) in Other Provision	—	136,984	53,061	(56,567)	15,854	58,388	86,703	(700,051)	35,205	(352,400)	(3,173)	44,897
受取利息及び受取配当金	Interest and Dividends Income	(40,102)	(41,782)	(37,842)	(49,170)	(46,207)	(40,589)	(49,574)	(51,807)	(65,368)	(71,725)	(56,695)	(63,058)
支払利息	Interest Expenses	205,474	144,328	98,980	112,654	98,554	79,914	62,900	57,464	89,145	115,082	80,545	42,010
持分による法投資損益 (()は益)	Equity in (Earnings) Losses of Affiliates	(115,210)	933,420	(166,100)	(464,003)	(376,099)	(299,076)	(283,103)	(436,155)	(406,602)	69,852	(15,857)	(168,813)
権利金収入	Foregift Income	—	—	—	—	—	—	—	—	—	—	(880,000)	—
建物解体費用	Demolition Cost	—	—	—	—	—	—	—	—	—	—	380,000	—
為替差損益 (()は益)	Foreign Exchange Losses (Gains)	—	—	—	46,056	(12,965)	520	(27,797)	(2,648)	39,968	(33,896)	(54,705)	(34,272)
関係会社株式売却益	Gain on Sales of Subsidiaries and Affiliates' Stocks	—	—	—	—	(27,120)	—	—	—	—	—	—	—
有価証券売却損益	Loss (Gain) on Sales of Securities	213,804	2,425	(263)	—	—	—	—	—	—	—	—	—
投資有価証券評価損	Loss (Gain) on Valuation of Investment Securities	—	164,458	571,319	543,238	—	—	62,526	113,585	3,104	291,376	215,720	70,110
投資有価証券売却損益 (()は益)	Loss (Gain) on Sales of Investment Securities	—	(177,441)	34,694	(23,624)	(22,780)	(128,709)	(1,568)	114	(130,725)	2,065	(2,198)	(9,554)
固定資産除却損	Loss on Retirement of Noncurrent Assets	139,580	51,887	88,892	255,733	283,249	274,494	102,862	59,405	155,188	64,427	104,113	91,654
固定資産売却損益 (()は益)	Loss (Gain) on Sales of Noncurrent Assets	207,464	—	4,815	(195,362)	(22,164)	36,115	(37,031)	1,005	40,224	(105,252)	959	(1,576)
出資金評価損	Loss on Valuation of Investments in Capital	—	—	—	—	—	—	—	3,000	—	—	—	—
会員権評価損	Loss on Valuation of Membership	—	—	8,800	—	—	—	—	—	—	—	—	—
確定拠出年金移行に伴う利益	Gain on Change of Defined Contribution	—	—	—	—	—	—	(335,520)	—	—	—	—	—
災害による受取保険金	Insurance Proceeds Due to Disasters	—	—	—	—	—	(36,558)	(24,308)	—	—	—	—	—
売上債権の増減額 (()は増加)	Decrease (Increase) in Notes and Accounts Receivable-Trade	1,114,550	(45,710)	413,658	62,140	105,177	1,220,284	519,049	256,028	519,293	834,505	138,404	46,085
たな卸資産の増減額 (()は増加)	Decrease (Increase) in Inventories	183,127	(559,429)	(14,002)	(328,160)	(417,072)	156,228	(218,582)	(714,946)	594,783	(91,720)	1,178,530	(259,937)
仕入債務の増減額 (()は増加)	Increase (Decrease) in Notes and Accounts Payable-Trade	(667,510)	1,046,978	(250,756)	(688,381)	95,216	(607,597)	(275,177)	(1,195,299)	(374,270)	(1,405,478)	35,656	223,207
未払消費税等の増減額 (()は減少)	Increase (Decrease) in Accrued Consumption Taxes	—	8,304	24,111	(50,256)	1,550	70,303	(68,483)	14,931	89,615	(66,749)	71,449	122,105
前払費用の増減額 (()は増加)	Decrease (Increase) in Prepaid Expenses	—	—	—	(686,460)	—	—	—	—	—	—	—	—
その他の資産の増減額 (()は増加)	Decrease (Increase) in Other Assets	95,927	100,196	(98,892)	118,906	21,047	(4,127)	70,683	359,937	281,474	93,834	197,859	343,657
その他の負債の増減額 (()は減少)	Increase (Decrease) in Other Liabilities	286,589	55,961	(12,224)	(53,391)	(92,627)	66,978	391,647	(145,987)	(572,301)	(660,237)	239,123	(351,623)
役員賞与	Directors' bonuses	(52,099)	(41,300)	(61,100)	(58,300)	(57,000)	(56,600)	(67,550)	(61,050)	—	—	—	—
小計	Subtotal	3,802,891	3,475,063	3,545,352	2,216,975	3,380,526	4,557,263	3,198,935	855,844	3,711,912	1,899,243	5,830,775	4,205,551
利息及び配当金の受取額	Interest and Dividends Income Received	40,102	101,027	150,316	164,517	152,773	147,385	148,074	159,461	171,173	234,901	165,463	171,824
利息の支払額	Interest Expenses Paid	(205,000)	(172,046)	(89,904)	(114,521)	(95,289)	(76,808)	(60,661)	(57,057)	(90,633)	(115,894)	(76,096)	(39,739)
災害による保険金の受取額	Insurance Proceeds Due to Disasters	—	—	—	—	—	36,558	24,308	—	—	—	—	—
法人税等の支払額	Income Taxes Paid	(351,293)	(1,444,812)	(1,590,242)	(956,422)	(762,261)	(1,463,652)	(1,452,664)	(971,140)	(1,336,661)	(985,159)	(1,072,299)	(1,523,123)
営業活動によるキャッシュ・フロー	Net Cash Provided by (Used in) Operating Activities	3,286,700	1,959,261	2,015,522	1,310,549	2,675,749	3,200,746	1,857,992	(12,891)	2,455,791	1,033,090	4,847,843	2,858,087

連結キャッシュフロー計算書 / Consolidated Statements of Cash Flows

(千円 / Thousands of yen)

決算期	Fiscal Years Ended	2000/2	2001/2	2002/2	2003/2	2004/2	2005/2	2006/2	2007/2	2008/2	2009/2	2010/2	2011/2
II 投資活動によるキャッシュ・フロー	II Cash Flows from Investing Activities												
有価証券の売却による収入	Proceeds from Sales of Short-term Investment Securities	—	134,105	263	—	—	—	—	—	—	—	—	—
有形固定資産等の取得による支出	Purchase of Property, Plant and Equipment	(745,000)	(1,513,151)	(695,561)	(2,431,151)	(1,148,631)	(588,628)	(1,063,506)	(324,111)	(376,821)	(309,699)	(390,736)	(971,383)
有形固定資産等の売却による収入	Proceeds from Sales of Property, Plant and Equipment	58,000	—	13,193	272,971	122,863	55,643	221,099	9,985	13,653	18,368	5,096	1,966
無形固定資産等の取得による支出	Purchase of Intangible Assets	(89,000)	—	(1,174)	—	—	—	(91,250)	(239,771)	(420,732)	(53,477)	(65,831)	(6,756)
無形固定資産の売却による収入	Proceeds from Sales of Intangible Assets	—	—	—	—	—	—	—	464	33	—	—	—
投資資産の売却による収入	Proceeds from Sales of Investment Assets	—	—	—	—	—	—	—	—	—	166,773	—	—
投資有価証券の取得による支出	Purchase of Investment Securities	—	(1,060,902)	(29,340)	(446,266)	(909,058)	(50,290)	(219,103)	(767,225)	(393,278)	(31,597)	(17,735)	(22,044)
投資有価証券の売却による収入	Proceeds from Sales of Investment Securities	34,000	494,929	36,187	265,451	643,947	172,549	30,245	7,000	154,312	297	13,305	62,350
連結子会社株式の取得による支出	Purchase of Shares of Consolidated Subsidiaries	—	—	—	—	—	—	—	(100,894)	(10,948)	—	—	—
連結子会社株式の売却による収入	Proceeds from Sales of Share of Consolidated Subsidiaries	—	744,300	114,870	—	—	267,769	—	712	—	—	—	—
連結子会社の取得による支出	Purchase of Consolidated Subsidiaries	—	(30,000)	—	(272,533)	—	(242,589)	—	(222,394)	—	(216,285)	—	—
営業譲受による支出	Payments for Transfer of Business	—	—	—	—	(558,475)	—	(632,533)	—	—	—	—	—
短期貸付による支出	Payments for Short-term Loans Receivable	—	—	—	—	—	—	(10,000)	—	—	—	—	—
長期貸付による支出	Payments for Long-term Loans Receivable	—	—	—	(7,700)	(27,240)	(21,905)	(592,300)	(10,600)	(18,459)	(9,798)	(21,264)	(10,852)
長期貸付金の回収による収入	Collection of Long-term Loans Receivable	286,595	25,598	147,592	18,527	31,964	33,893	24,752	17,461	23,616	21,807	20,475	20,568
長期前払費用にかかる支出	Payments for Long-term Prepaid Expenses	—	—	(63,912)	(51,731)	(53,167)	(25,357)	(37,764)	(31,005)	(33,962)	(38,480)	(49,331)	(14,937)
定期預金の払戻による収入	Proceeds from Withdrawal from Time Deposits	—	—	—	10,000	—	—	—	—	—	18,020	—	—
定期預金の預入による支出	Payments into Time Deposits	—	—	—	—	—	—	—	—	(6,009)	(2,509)	—	—
その他投資にかかる支出	Other Payments	—	(330,090)	(147,054)	(130,388)	(63,700)	(66,330)	(358,909)	(49,156)	(205,928)	(88,190)	(149,033)	(439,249)
その他投資の回収による収入	Other Proceeds	303,000	88,284	92,737	34,253	456,458	358,287	275,976	256,206	300,095	419,468	270,124	414,194
投資活動によるキャッシュ・フロー	Net Cash Provided by (Used in) Investing Activities	(152,405)	(1,446,927)	(532,199)	(2,738,569)	(1,505,038)	(106,961)	(2,453,291)	(1,453,328)	(974,429)	(105,304)	(384,931)	(966,144)
III 財務活動によるキャッシュ・フロー	III Cash Flows from Financing Activities												
短期借入金の純増減額	Net Increase (Decrease) in Short-term Loans Payable	(2,214,000)	(455,000)	100,256	152,143	(147,440)	(566,162)	7,000	2,141,920	(191,554)	1,456,752	(3,450,000)	(1,310,000)
長期借入による収入	Proceeds from Long-term Loans Payable	796,505	1,672,980	—	1,900,000	700,000	—	100,000	—	—	—	—	487,000
長期借入の返済による支出	Repayment of Long-term Loans Payable	—	(998,922)	(1,082,651)	(1,299,683)	(1,286,232)	(1,220,043)	(912,275)	(559,348)	(203,125)	(218,963)	(225,985)	(255,424)
社債の償還による支出	Redemption of Bonds	(1,000,000)	(1,613,100)	—	—	—	—	861,340	—	(40,000)	(462,500)	(330,000)	(10,000)
自己株式の売却による収入	Proceeds from Sales of Treasury Stock	5,000	—	35,150	6,900	—	62	625	59	207	65	190	—
自己株式の取得による支出	Purchase of Treasury Stock	—	(1,109)	(11,342)	(9,600)	(510)	(2,877)	(11,249)	(22,142)	(316,342)	(544,637)	(388,994)	(121,532)
連結子会社の株式発行による収入	Proceeds from Issuance of Shares of Consolidated Subsidiaries	—	661,600	—	—	—	—	—	—	—	—	—	—
配当金の支払額	Cash Dividends Paid	(155,361)	(203,222)	(199,036)	(198,966)	(218,758)	(258,524)	(298,258)	(298,253)	(762,387)	(602,369)	(585,673)	(586,738)
少数株主への配当金の支払額	Cash Dividends Paid to Minority Shareholders	—	—	(48,108)	(51,537)	(58,509)	(72,838)	(99,105)	(106,205)	(230)	—	—	—
その他の財務活動に伴う支出	Other Payments	—	—	—	—	—	—	—	—	—	(38,253)	(123,413)	(108,243)
財務活動によるキャッシュ・フロー	Net Cash Provided by (Used in) Financing Activities	(2,567,856)	(936,773)	(1,205,732)	499,255	(1,011,450)	(2,120,384)	(351,958)	1,156,029	(1,513,433)	(409,905)	(5,103,877)	(1,904,938)
IV 現金及び現金同等物に係る換算差額	IV Effect of Exchange Rate Change on Cash and Cash Equivalents	—	3,133	3,653	(5,495)	(2,735)	(5,123)	10,462	775	(1,324)	(7,813)	74	(2,364)
V 現金及び現金同等物の増減額	V Net Increase (Decrease) in Cash and Cash Equivalents	566,439	(421,305)	281,243	(934,260)	156,525	968,277	(936,795)	(309,416)	(33,395)	510,067	(640,891)	(15,359)
VI 現金及び現金同等物期首残高	VI Cash and Cash Equivalents at Beginning of Period	1,133,269	1,716,708	1,295,403	1,496,495	789,701	946,227	1,914,504	977,709	682,481	649,085	1,159,152	518,261
VII 新規連結に伴う現金及び現金同等物の増加	VII Increase in Cash and Cash Equivalents from Newly Consolidated Subsidiary	17,000	—	—	227,466	—	—	—	14,187	—	—	—	—
VIII 連結除外に伴う現金及び現金同等物の減少額	VIII Decrease in Cash and Cash Equivalents Resulting from Exclusion of Subsidiaries from Consolidation	—	—	(80,151)	—	—	—	—	—	—	—	—	—
IX 現金及び現金同等物期末残高	IX Cash and Cash Equivalents at End of Period	1,716,708	1,295,403	1,496,495	789,701	946,227	1,914,504	977,709	682,481	649,085	1,159,152	518,261	502,901

連結貸借対照表		Consolidated Balance Sheets											(千円 / Thousands of yen)
決算期	Fiscal Years Ended	2000/2	2001/2	2002/2	2003/2	2004/2	2005/2	2006/2	2007/2	2008/2	2009/2	2010/2	2011/2
流動資産	Current Assets	4,024,990	4,381,680	4,886,571	4,874,140	5,387,098	6,288,866	6,314,518	6,543,303	6,181,333	7,014,759	8,868,083	10,910,161
固定資産	Noncurrent Assets	3,821,648	4,318,888	4,450,915	5,974,039	6,340,671	6,102,845	6,526,481	6,667,748	6,808,124	5,925,978	5,715,350	6,411,804
資産合計	Total Assets	7,846,638	8,700,568	9,337,487	10,848,179	11,727,770	12,391,712	12,840,998	13,211,052	12,989,458	12,940,737	14,583,433	17,321,966
流動負債	Current Liabilities	3,535,805	3,075,361	3,110,952	3,443,171	3,622,065	3,896,449	4,408,987	4,515,412	4,148,456	3,459,904	4,343,625	5,753,086
固定負債	Noncurrent Liabilities	575,647	416,098	350,024	1,131,920	1,315,355	1,044,193	765,890	508,015	461,806	474,638	459,267	723,586
負債合計	Total Liabilities	4,111,452	3,491,460	3,460,977	4,575,091	4,937,420	4,940,642	5,174,878	5,023,428	4,610,263	3,934,543	4,802,892	6,476,692
資本金	Capital Stock	652,675	951,875	951,875	951,875	951,875	951,875	951,875	951,875	951,875	400,000	400,000	400,000
法定準備金	Statutory Reserves	419,175	793,575	808,575	808,575	—	—	—	—	—	—	—	—
再評価差額金	Revaluation Reserve	(610,831)	(610,831)	(610,831)	(610,831)	—	—	—	—	—	—	—	—
剰余金等	Retained Earnings	3,274,167	4,074,489	4,692,143	5,094,425	—	—	—	—	—	—	—	—
自己株式	Treasury Stock	—	—	(4,310)	(6,037)	(7,149)	(11,862)	(22,741)	—	—	—	—	—
資本剰余金	Capital Surplus	—	—	—	—	733,150	733,392	734,018	734,207	734,207	1,286,082	1,286,082	1,286,082
利益剰余金	Retained Earnings	—	—	—	—	5,694,956	6,351,074	6,990,243	7,468,707	7,777,021	8,101,262	8,807,453	9,871,283
土地再評価差額金	Revaluation Reserve for Land	—	—	—	—	(625,034)	(624,719)	(1,052,069)	(1,052,069)	(1,052,069)	(702,383)	(702,383)	(702,383)
その他有価証券評価差額金	Valuation Difference on Available-for-Sale Securities	—	—	39,059	35,082	42,551	51,309	64,794	84,903	(31,840)	(78,767)	(10,611)	(9,689)
純資産合計	Total Net Assets	3,735,186	5,209,108	5,876,510	6,273,088	6,790,349	7,451,069	7,666,120	8,187,624	8,379,194	9,006,194	9,780,540	10,845,293
負債及び純資産合計	Total Liabilities and Net Assets	7,846,638	8,700,568	9,337,487	10,848,179	11,727,770	12,391,712	12,840,998	13,211,052	12,989,458	12,940,737	14,583,433	17,321,966

連結損益計算書		Consolidated Statements of Income											(千円 / Thousands of yen)
決算期	Fiscal Years Ended	2000/2	2001/2	2002/2	2003/2	2004/2	2005/2	2006/2	2007/2	2008/2	2009/2	2010/2	2011/2
売上高	Net Sales	13,243,512	14,408,321	15,133,139	15,208,543	16,274,244	16,823,789	18,405,146	24,228,160	23,236,349	23,225,163	21,052,806	21,423,204
売上総利益	Gross Profit	7,961,130	8,571,354	8,960,909	9,067,618	9,508,533	9,743,016	10,717,544	16,047,372	15,580,780	15,541,664	14,546,941	14,845,265
人件費	Payroll Allowance	2,915,564	3,154,145	3,307,669	3,589,373	3,627,079	3,416,032	3,545,024	3,693,336	3,808,677	3,850,983	3,700,848	3,683,643
その他経費	Other Expenses	3,431,203	3,718,191	3,913,112	4,049,595	4,064,993	4,240,729	4,995,020	10,354,313	9,597,382	9,286,503	8,238,002	8,127,663
減価償却費	Depreciation and Amortization	189,578	218,548	228,684	233,680	225,098	192,792	178,585	240,260	286,321	319,962	276,588	339,751
販管費計	Total Selling and Administrative Expenses	6,536,346	7,090,884	7,449,466	7,872,649	7,917,171	7,849,555	8,718,630	14,287,909	13,692,381	13,457,449	12,215,440	12,151,058
営業利益	Operating Income	1,424,784	1,480,469	1,511,443	1,194,969	1,591,361	1,893,461	1,998,913	1,759,462	1,888,399	2,084,214	2,331,501	2,694,206
営業外収益	Non-Operating Income	10,619	17,778	18,226	33,373	36,417	52,001	93,496	101,019	156,373	101,287	112,610	115,477
営業外費用	Non-Operating Expenses	34,814	23,041	17,479	64,974	60,383	51,337	49,185	53,440	36,367	13,071	14,151	23,512
経常利益	Ordinary Income	1,400,589	1,475,206	1,512,189	1,163,368	1,567,395	1,894,126	2,043,224	1,807,041	2,008,405	2,172,431	2,429,960	2,786,171
特別利益	Extraordinary Income	17,500	15,100	—	35,056	—	9,800	1,881	—	680	111,483	14,343	900
特別損失	Extraordinary Loss	352,180	167,838	87,730	149,980	257,023	299,150	308,613	217,497	479,399	476,346	270,911	165,161
税金等調整前当期純利益	Income before Income Taxes and Minority Interests	1,065,908	1,322,468	1,424,458	1,048,443	1,310,372	1,604,776	1,736,492	1,589,544	1,529,685	1,807,569	2,173,392	2,621,909
法人税等	Income Taxes	605,658	584,670	642,005	486,847	619,380	748,238	853,483	824,360	927,971	673,642	1,007,202	1,103,449
当期純利益	Net Income	460,249	737,798	782,453	561,596	690,991	856,538	899,599	765,183	601,714	1,133,926	1,166,190	1,518,460

		(千円 / Thousands of yen)											
貸借対照表	Balance Sheets												
決算期	Fiscal Years Ended	2000/2	2001/2	2002/2	2003/2	2004/2	2005/2	2006/2	2007/2	2008/2	2009/2	2010/2	2011/2
流動資産	Current Assets	—	—	—	—	—	—	—	4,968,874	3,525,658	2,317,083	4,057,049	3,923,748
固定資産	Noncurrent Assets	—	—	—	—	—	—	—	18,267,617	16,922,741	15,924,862	14,283,166	14,110,766
資産合計	Total Assets	—	—	—	—	—	—	—	23,236,492	20,448,400	18,241,946	18,340,216	18,034,514
流動負債	Current Liabilities	—	—	—	—	—	—	—	5,448,636	4,465,358	2,880,558	2,518,728	1,796,511
固定負債	Noncurrent Liabilities	—	—	—	—	—	—	—	2,184,187	1,431,021	1,249,997	1,622,620	1,540,087
負債合計	Total Liabilities	—	—	—	—	—	—	—	7,632,823	5,896,380	4,130,556	4,141,349	3,336,638
資本金	Capital Stock	—	—	—	—	—	—	—	400,000	400,000	400,000	400,000	400,000
資本剰余金	Capital Surplus	—	—	—	—	—	—	—	13,267,863	13,267,863	13,267,863	13,267,863	13,267,863
利益剰余金	Retained Earnings	—	—	—	—	—	—	—	745,099	468,899	421,513	520,586	947,152
株主資本合計	Total Shareholders' Equity	—	—	—	—	—	—	—	14,412,962	14,136,762	14,089,376	14,188,449	14,615,016
評価・換算差額等合計	Valuation and Translation Adjustments	—	—	—	—	—	—	—	1,190,705	415,257	22,013	10,417	82,859
純資産合計	Total Net Assets	—	—	—	—	—	—	—	15,603,668	14,552,020	14,111,390	14,198,867	14,697,875
負債及び純資産合計	Total Liabilities and Net Assets	—	—	—	—	—	—	—	23,236,492	20,448,400	18,241,946	18,340,216	18,034,514

		(千円 / Thousands of yen)											
損益計算書	Statements of Income												
決算期	Fiscal Years Ended	2000/2	2001/2	2002/2	2003/2	2004/2	2005/2	2006/2	2007/2	2008/2	2009/2	2010/2	2011/2
営業収益	Operating Revenues	—	—	—	—	—	—	—	11,155,338	18,036,411	13,804,734	10,862,818	9,511,112
売上高	Net Sales	—	—	—	—	—	—	—	10,118,500	15,888,525	11,765,220	8,964,823	8,085,926
売上総利益	Gross Profit	—	—	—	—	—	—	—	1,663,379	2,728,629	1,948,198	1,688,521	1,588,851
その他営業収入	Other Operating Revenues	—	—	—	—	—	—	—	1,036,838	2,147,886	2,039,514	1,897,995	1,425,187
営業総利益	Gross Operating Profit	—	—	—	—	—	—	—	2,700,217	4,876,516	3,987,712	3,586,516	3,014,038
人件費	Payroll Allowance	—	—	—	—	—	—	—	785,992	1,127,024	1,006,118	967,834	896,194
その他経費	Other Expenses	—	—	—	—	—	—	—	1,510,264	2,808,872	2,021,511	1,722,577	1,577,043
減価償却費	Depreciation and Amortization	—	—	—	—	—	—	—	161,456	307,097	311,901	334,560	286,012
販管費計	Total Selling and Administrative Expenses	—	—	—	—	—	—	—	2,457,713	4,242,994	3,339,530	3,024,971	2,759,249
営業利益	Operating Income	—	—	—	—	—	—	—	242,504	633,522	648,182	561,544	254,789
営業外収益	Non-Operating Income	—	—	—	—	—	—	—	86,676	229,266	291,762	188,282	223,900
営業外費用	Non-Operating Expenses	—	—	—	—	—	—	—	18,485	88,243	53,761	7,649	5,082
経常利益	Ordinary Income	—	—	—	—	—	—	—	310,695	774,546	886,183	742,177	437,607
特別利益	Extraordinary Income	—	—	—	—	—	—	—	20,018	227,729	—	896,412	50,986
特別損失	Extraordinary Loss	—	—	—	—	—	—	—	166,616	906,374	628,482	1,325,886	523,576
税引前当期純利益	Net Income before Income Taxes	—	—	—	—	—	—	—	164,098	95,900	257,700	312,703	1,017
法人税等	Income Taxes	—	—	—	—	—	—	—	46,482	301,700	165,086	73,630	(565,548)
当期純利益 (損失)	Net Income (Loss)	—	—	—	—	—	—	—	117,615	(205,800)	92,614	239,073	566,566

			(千円 / Thousands of yen)		
2009/2	2010/2	2011/2			
879,858	899,440	936,032			
3,062,274	2,877,662	2,372,258			
3,942,132	3,777,102	3,308,291			
1,372,224	1,542,240	1,665,313			
978,291	732,239	676,681			
2,350,516	2,274,479	2,341,994			
297,500	297,500	297,500			
29,500	29,500	29,500			
1,259,792	1,164,586	637,656			
1,586,792	1,491,586	964,656			
4,823	11,036	1,640			
1,591,615	1,502,622	966,296			
3,942,132	3,777,102	3,308,291			

			(千円 / Thousands of yen)		
2009/2	2010/2	2011/2			
—	—	7,772,577			
3,810,016	6,948,268	7,737,104			
2,239,086	4,051,377	4,421,584			
—	—	35,473			
—	—	4,457,057			
848,672	1,743,903	2,002,249			
1,156,948	2,111,986	2,374,719			
59,028	117,048	120,110			
2,064,650	3,972,937	4,497,416			
174,435	78,439	(40,359)			
47,924	53,318	56,689			
25,403	36,479	30,294			
196,956	95,278	(13,964)			
1,747	3,100	13,992			
34,637	152,996	220,314			
164,066	(54,616)	(220,286)			
97,120	40,590	306,642			
66,946	(95,206)	(526,930)			

(注)
2009年2月期の(株)三鈴の決算数値は、6ヶ月分の数値です。
Note
Figures for fiscal year ended February 28, 2009, are six-months figures for MISUZU Co., Ltd.

貸借対照表		Balance Sheets											(千円 / Thousands of yen)	
決算期	Fiscal Years Ended	2001/2	2002/2	2003/2	2004/2	2005/2	2006/2	2007/2	2008/2	2009/2	2010/2	2011/2		
流動資産	Current Assets	134,749	255,190	335,088	658,109	615,236	603,031	708,522	885,453	1,200,515	1,280,731	1,182,469		
固定資産	Noncurrent Assets	405,258	442,065	396,496	854,682	764,678	824,870	1,333,933	1,136,323	1,004,025	957,016	904,341		
資産合計	Total Assets	540,007	697,255	731,585	1,512,792	1,379,914	1,427,901	2,042,456	2,021,777	2,204,540	2,237,748	2,086,810		
流動負債	Current Liabilities	107,980	209,220	212,637	569,348	507,038	785,543	1,419,259	1,562,057	1,716,155	1,764,882	1,612,409		
固定負債	Noncurrent Liabilities	358,123	401,891	409,515	806,052	280,754	49,418	63,166	81,462	88,153	93,764	137,052		
負債合計	Total Liabilities	466,103	611,111	622,152	1,375,401	787,792	834,962	1,482,425	1,643,520	1,804,309	1,858,646	1,750,462		
資本金	Capital Stock	90,000	90,000	94,200	94,200	312,000	312,000	312,000	312,000	312,000	312,000	312,000		
資本剰余金	Capital Surplus	—	—	—	—	217,800	217,800	217,800	217,800	217,800	217,800	217,800		
利益剰余金	Retained Earnings	(16,096)	(3,856)	15,233	43,191	62,321	63,139	30,231	(151,543)	(129,568)	(150,697)	(193,441)		
純資産合計	Total Net Assets	73,903	86,143	109,433	137,391	592,122	592,939	560,031	378,256	400,231	379,102	336,358		
負債及び純資産合計	Total Liabilities and Net Assets	540,007	697,255	731,585	1,512,792	1,379,914	1,427,901	2,042,456	2,021,777	2,204,540	2,237,748	2,086,810		
損益計算書		Statements of Income											(千円 / Thousands of yen)	
決算期	Fiscal Years Ended	2001/2	2002/2	2003/2	2004/2	2005/2	2006/2	2007/2	2008/2	2009/2	2010/2	2011/2		
売上高	Net Sales	1,097,646	1,703,427	2,168,852	4,700,952	4,530,861	4,423,341	4,936,784	6,870,314	7,981,206	7,826,439	7,545,436		
売上総利益	Gross Profit	499,899	673,833	863,149	1,639,138	1,596,082	1,691,125	1,902,810	2,847,085	2,782,667	2,738,534	2,689,025		
人件費	Payroll Allowance	287,111	371,681	428,215	667,393	707,773	716,174	807,623	1,088,472	1,072,034	1,058,921	1,047,520		
その他経費	Other Expenses	191,168	251,533	378,180	863,910	944,451	914,614	1,049,326	1,667,266	1,645,300	1,665,688	1,591,809		
減価償却費	Depreciation and Amortization	11,569	16,303	17,800	35,818	32,284	32,862	23,217	23,437	39,434	31,834	27,484		
販管費計	Total Selling and Administrative Expenses	489,858	639,517	824,196	1,567,122	1,684,510	1,663,650	1,880,166	2,779,176	2,756,769	2,756,444	2,666,813		
営業利益	Operating Income	10,041	34,315	38,953	72,016	(88,428)	27,474	22,643	67,908	25,897	(505)	22,211		
営業外収益	Non-Operating Income	1,907	4,088	2,667	13,035	33,117	24,368	35,892	19,709	17,451	18,638	12,144		
営業外費用	Non-Operating Expenses	3,993	3,743	5,747	16,836	15,538	9,682	38,401	19,891	13,980	6,940	5,466		
経常利益	Ordinary Income	7,955	34,660	35,873	68,216	(70,849)	42,160	20,134	67,726	29,368	11,193	28,890		
特別利益	Extraordinary Income	—	—	—	—	173,175	—	—	—	519	—	114		
特別損失	Extraordinary Loss	7,710	13,723	1,389	14,040	55,367	26,682	37,918	221,360	98,614	35,304	35,381		
税引前当期純利益	Net Income before Income Taxes	245	20,936	34,484	54,176	46,957	15,477	(17,784)	(153,634)	(68,726)	(24,111)	(6,377)		
法人税等	Income Taxes	4,485	8,695	15,394	26,218	20,058	14,660	15,124	28,139	(90,700)	(2,981)	36,366		
当期純利益 (損失)	Net Income (Loss)	(4,240)	12,240	19,089	27,957	26,899	817	(32,908)	(181,774)	21,974	(21,129)	(42,743)		

[2011年2月28日現在 / As of February 28, 2011]

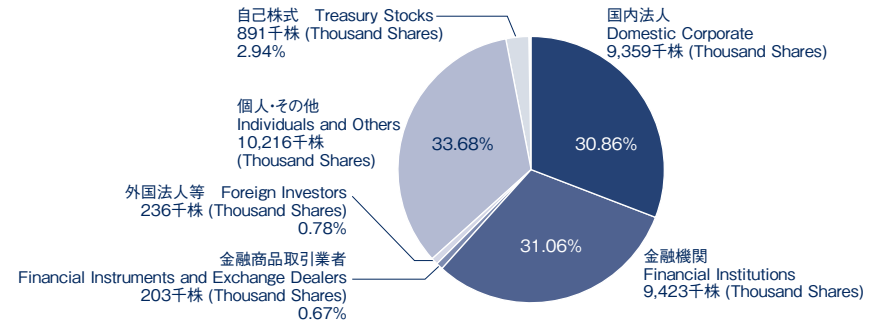
証券コード Ticker Symbol Number	8008
株式上市日 Listed Date	1972年12月 December 1972
上場証券取引所 Stock Exchange Listed	東京証券取引所市場第一部 Tokyo Stock Exchange 1st section
株主名簿管理人 Share Handling Agent	三菱UFJ信託銀行株式会社 Mitsubishi UFJ Trust and Banking Corporation
発行済株式総数 Number of Shares Issued and Outstanding	30,331,356株 (Shares)
1単元株式数 Trading Unit of Shares	100株 (Shares)
株主数 Number of Shareholders	9,322名

大株主の状況 Major Shareholders

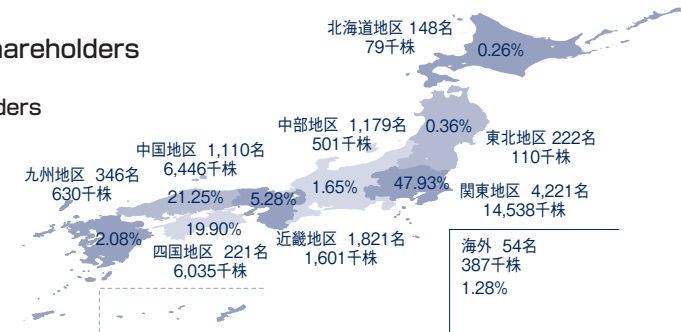
株主名 Shareholders' Name	持株数(千株) Shares (Thousand)	持株比率(%株) % of Total
(株)フジ Fuji Co., Ltd.	5,224	17.22
(株)広島銀行 The Hiroshima Bank, Ltd.	1,442	4.75
第一生命保険(株) The Dai-ichi Mutual Life Insurance Co., Ltd.	1,424	4.70
F&Aアクア共栄会 F&A Aqua Co-Prosperity Association	1,068	3.52
(株)三井住友銀行 Sumitomo Mitsui Banking Corporation	781	2.58
東京海上日動火災保険(株) Tokio Marine & Nichido Fire Insurance Co., Ltd.	758	2.50
(株)伊予銀行 The Iyo Bank, Ltd.	739	2.44
F&Aアクアホールディングス従業員持株会 F&A Aqua Holdings Employees' Shareholding Association	492	1.63
(株)りそな銀行 Resona Bank, Ltd.	485	1.60
(株)もみじ銀行 Momiji Bank, Ltd.	477	1.57

(注) 当社は自己株式 891,110 株を保有していますが、上記大株主からは除外しています。
Note: In addition to the aforementioned, the Company holds 891,110 shares of treasury stock.

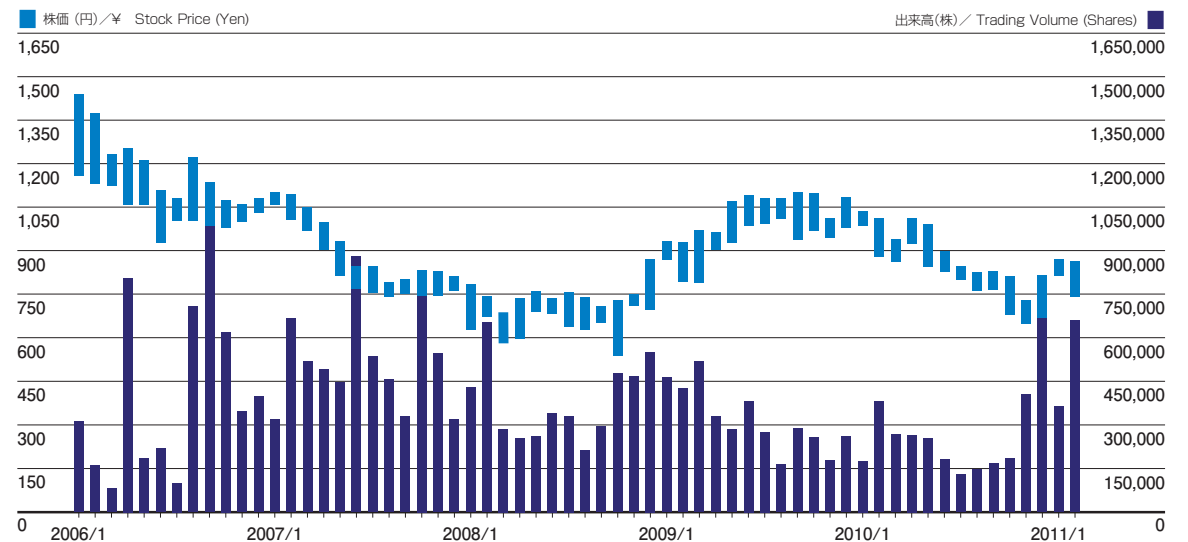
所有者別株式分布 Composition of Shareholders by Category



地域別株主分布 Composition of Shareholders by Region (Number of Shareholders and Thousands of Shares)



株価の推移 Stock Price Range





F&A AQUA
holdings, inc.